



www.follow-the-arrow.co.uk

A Series of 'How to' Guides

Paperless Geocaching

Using a Garmin Montana, Oregon, 62, Dakota
and eTrex 10/20/30

Version: 1

Date: 4th March 2012

Author: Chris Dale 'Graculus'

Contents

Before you start.....	2
Premium Membership or Basic Membership?.....	2
Profile settings for Pocket Queries.....	2
Getting Windows to Show File Types.....	2
How to Create and download the Pocket Query.....	3
Transfer the GPX file to the Garmin GPS.....	4
Transferring Individual Caches to the GPS.....	5
Setting up the Garmin Communicator.....	5
Downloading from the Search Page.....	6
Downloading from the Cache Page.....	6
Finding Geocaches and Waypoints on the GPS.....	7

Before you start

Premium Membership or Basic Membership?

Pocket Queries produce a GPX file which contains all the cache information; the description, hints, attributes etc and recent logs. If you transfer cache information singly from a cache page using the 'Send to My GPS' that is also a GPX file and contains all the cache information.

To use PQ's or Send to My GPS GPX files you must be a premium member.

Basic members cannot create or use PQ's and the Send to My GPS uses a LOC type file which only contains basic cache information; the name and GC number.

Profile settings for Pocket Queries

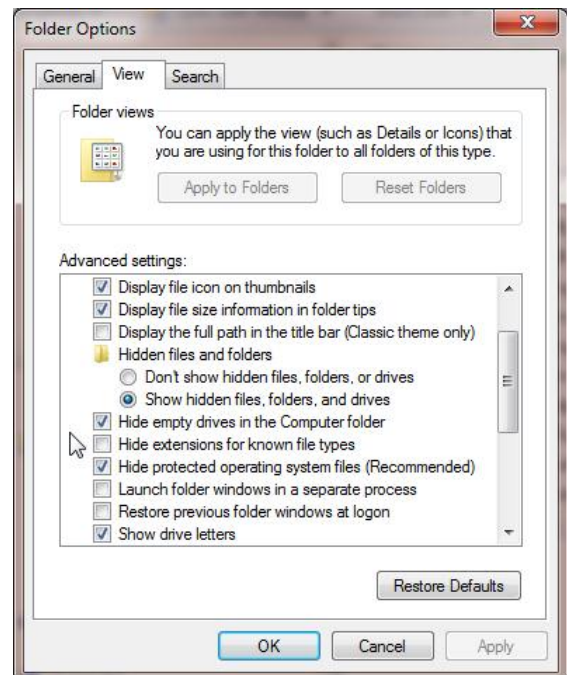
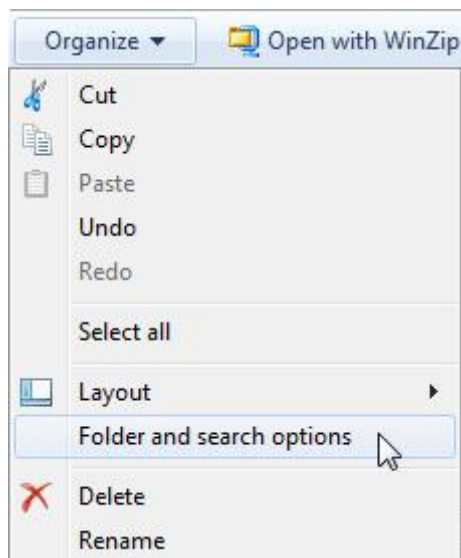
The GPX file also contains the attributes the cache owner has set but to get these you need to make sure your profile is set to use GPX file version 1.0.1 and not just the default version 1.0.

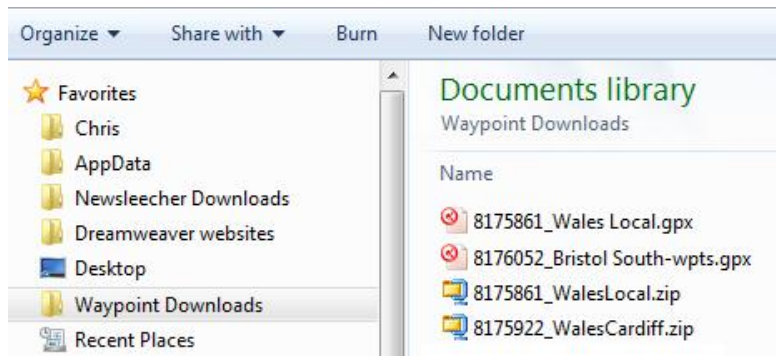
Go to Your Profile and then Account Details. The GPX file is set in the box at the bottom of that page.

Getting Windows to Show File Types

When you download a file Windows won't show the file extension by default. For example, you create a Pocket Query called *Bristol* and download it it as a single zip file (see later about zip files) called *Bristol.zip*. When you unzip it you get *bristol.gpx* and *bristol-wpts.gpx*. Windows will show these in Explorer or My Computer as *Bristol* (the zip file), *Bristol* (the gpx file) and *Bristol-wpts* (the other gpx file). So you get three files, two of which seem to have the same name (*Bristol*). Windows will show the appropriate icon against each one but it's easier if you get Windows to show the file extension.

In Windows Explorer or My Computer click on *Organize* and *Folder and search options* (Windows XP click on *Tools – Folder Options*). Then in the dialogue box that opens click the *View* tab and scroll down to *Hide file extensions for known file types*. Untick the box. Click OK. Now, the file extensions will appear.





How to Create and download the Pocket Query

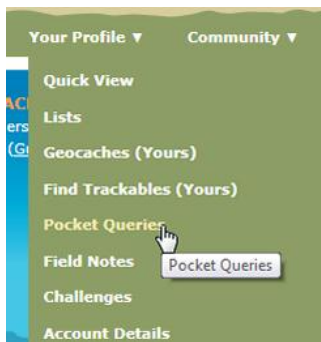
Helpful Hints!



When you create your PQ give it a name and make sure you tick the box at the bottom to show the name in the file. Makes it easier to identify them!

Select the day you want the PQ to run. Be careful as PQ's use the time of the Seattle office which is US Pacific time. There's a great little addon for Firefox to show you world clocks – Foxclocks.

1. Go to Geocaching.com and create the pocket query: Your Profile – Pocket Queries. You can have a maximum of 1000 caches with each query and may run 5 queries a day. For full details on how to do PQ's read the [Knowledge Books article](#).



Your Pocket Queries

Pocket Queries are custom geocache queries that can with you on cache hunts on your GPS and/or PDA. You can run a Pocket Query once or set i applications. You can run a Pocket Query once or set i geocaches or fewer can be delivered as an email attac individual search can run only once per day.

See detailed instructions on [creating your first Pocket](#)

Using this service you agree to the terms of [this licens](#)

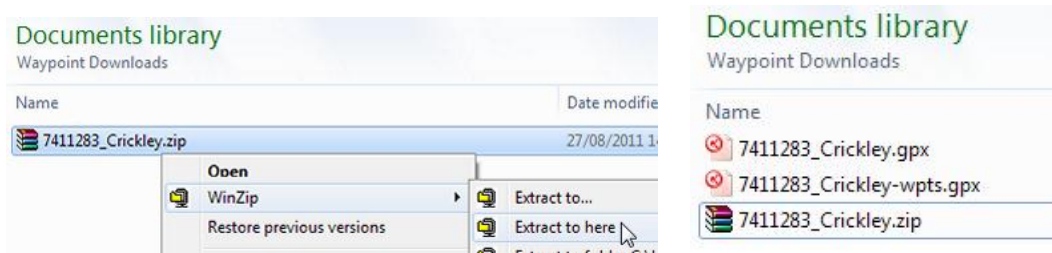


2. Select the day of the week you want the query to run and then fill in the search criteria you want. For example, you can select all cache types or just Traditional; large size or just micro and so on. For the 'Center Point' you can choose Home (uses the home coordinates in your profile), a cache (by waypoint GC code) or coordinates which you can get from Streetmap or Google Maps – [click here](#) to find out how.
3. Submit the query and you will get an email. If the PQ is 500 caches or less the PQ file is emailed to you. If it is over 500 the email gives you a link to your profile where you can download the PQ file.

Active Pocket Queries		Pocket Queries Ready for Download (4)		
Server Time: Saturday, 03 March 2012 03:42:32				
	Name	File Size	Waypoints	Last Generated (PST)
<input type="checkbox"/>	1. Bristol South	873.41 KB	747	02 Mar 12 (5 days remaining)
<input type="checkbox"/>	2. Wales Cardiff	1.14 MB	826	02 Mar 12 (5 days remaining)
<input type="checkbox"/>	3. Bristol North	988.21 KB	863	02 Mar 12 (5 days remaining)
<input type="checkbox"/>	4. Wales Local	899.52 KB	648	02 Mar 12 (5 days remaining)
	Delete			

4. You will need to unzip the file. Go to the .zip file, right click on it and select Extract all. Windows should be able to do this. If you have problems unzipping it then there are free programs that can be used to unzip the file such as [ZipGenius](#).

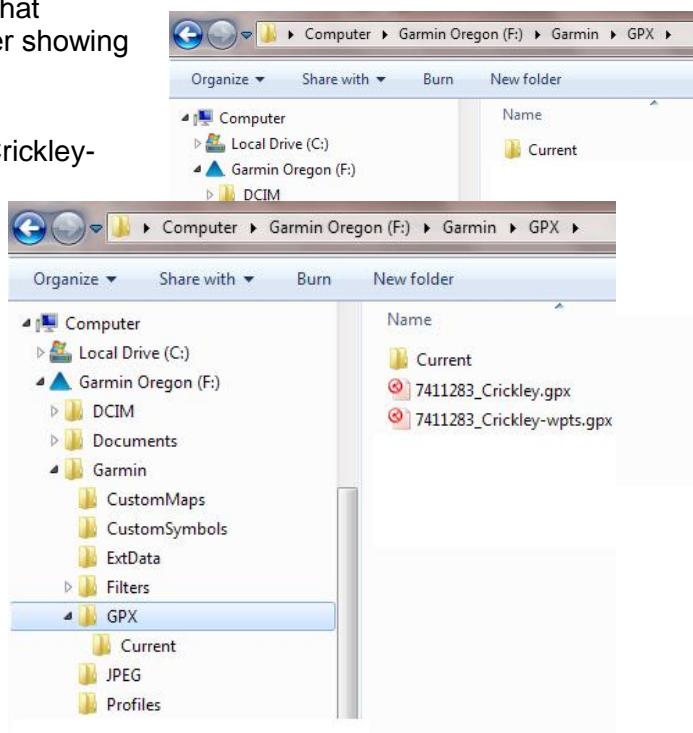
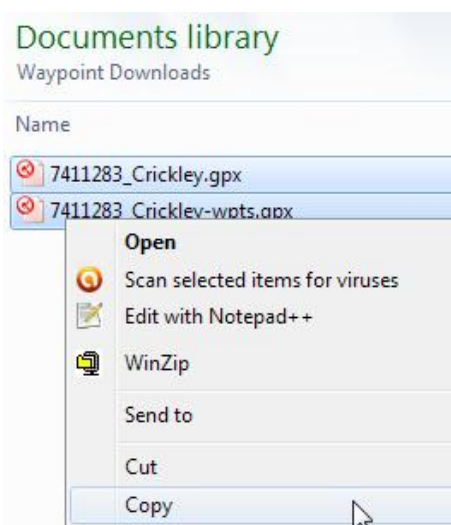
This is the result – two files. In this example the 7411283_Crickley.gpx is the caches and 7411283_Crickley-wpts.gpx is the additional waypoints (parking, stages etc). Please note I used Winzip to extract the files.



Transfer the GPX file to the Garmin GPS

Waypoints and Geocaches are held in the Garmin GPS memory. When you connect the GPS to your PC you can delete the currently stored Geocaches (GPX files) but you cannot delete the waypoints (child waypoints like parking and cache stages). These can only be deleted from the GPS setup menu before you connect it to the PC. Switch the GPS on and go to the Main Menu>Setup>Reset>Delete All Waypoints. If you don't do this and then add a new PQ using the method below there may be more waypoints in the PQ than your GPS can store because the current waypoint memory is nearly full. To check the waypoint memory go to Main Menu>Setup>Reset>Delete All Waypoints and it shows the % memory used.

1. Connect the Garmin GPS to your PC with the USB cable. It will switch on and the PC will detect it. Go to My Computer or Windows Explorer and navigate to the GPS device
2. In this example I'm using a Garmin Oregon. The PC has assigned it as the F drive. If you have a microSD card fitted then Windows will see this and also assign a drive letter to it. It should show as a 'Removable disk'. Please note there may be slight differences with the different Garmin GPS devices but the main folders (Garmin) are the same.
3. Click on the ▸ beside the Garmin folder of the Garmin Oregon (this is a + in Windows XP) then the ▸ sign beside the GPX folder that appears. There may be a 'Current' folder showing within this GPX folder (see later).
4. Now copy the two .gpx files (7411283_Crickley.gpx and 7411283_Crickley-



wpts.gpx) and paste them into the Garmin/GPX folder on the Oregon.

5. Make sure you correctly eject the GPS before unplugging it. When you copy files to a removable drive you need to make sure Windows has finished writing the data. If you unplug it too soon you may find the geocaches may not appear in the GPS. To eject a removable drive, right click on the drive (example Garmin Oregon) and select Eject.
6. When you switch on the GPS it will load any GPX files from this folder into memory and you will see the caches listed as Geocaches in the menu. Waypoints also appear in the waypoints menu. The Current folder is where the GPS stores your current track information. If you no longer want to keep the GPX files in the GPS or want to remove old ones and load new ones in then just navigate to this GPX folder and delete ALL the files there including the Current folder. Then paste the new files in.



Helpful Hints!

You can store a lot of PQ's, GPX files and waypoints up to the maximum the GPS supports. [Click here](#) for a comparison table of all Garmin GPS units and their capacities.

Transferring Individual Caches to the GPS

Setting up the Garmin Communicator

You can also transfer individual caches to the GPS from either the search window or cache page itself. Before you can do this you must install the Garmin Communicator. You'll be prompted to do this when you first try and download a cache and only have to install it once.

When the Communicator runs it will detect the GPS and if you have a microSD card installed it will detect that too.

You need to send caches to the main unit, not the microSD card.

To send the cache to the GPS click the *Write* button.



Downloading from the Search Page

With the search page open, just click on the little GPS symbol to the right of the list, *Send to GPS*. The Garmin Communicator will pop up and you simply click *Write*.

All Geocaches

By Username (Hidden) - User: the blorenges [Map this Location](#) | [New Search](#)

Total Records: 69 - Page: 1 of 4 - [< Prev](#) [<<](#) [<\[1 2 3 4\]](#) [>>](#) [Next >](#)

<input type="checkbox"/>				Description	Info	(D / T)	Placed	Last Found	
<input type="checkbox"/>			0	A Scilly event. by The Blorenges GC37R0C South West England, United Kingdom		1.5 / 1.5	06/23/2012		
<input type="checkbox"/>			3	Our new cats' Cats Ash cats cache. by The Blorenges GC2TAW6 South Wales, United Kingdom		1.5 / 2	04/17/2011	02/19/2012	Send to GPS
<input type="checkbox"/>			13	St Michael's Mount Meander by The Blorenges GC2EJRS South West England, United Kingdom		2 / 2.5	04/15/2011	02/23/2012	

If you want to download more than one cache then select those you want and at the bottom click *Download Waypoints*.

<input checked="" type="checkbox"/>	3	Our new cats' Cats Ash cats cache. by The Blorenges GC2TAW6 South Wales, United Kingdom
<input checked="" type="checkbox"/>	13	St Michael's Mount Meander by The Blorenges GC2EJRS South West England, United Kingdom

Waypoint Downloads
To download geocaches, check the box to the left of each listing you wish to download. When you're done, click the download button to the right. [Read about waypoint downloads.](#)

Downloading from the Cache Page

With a cache page open just click on the *Send to My GPS* button. Again, the Garmin Communicator will open, just click *Write*.

Our new cats' Cats Ash cats cache.
A cache by [The Blorenges](#) Hidden : 04/17/2011

Difficulty: ★★★★★
Terrain: ★★★★★

Size: (Regular)

3 Favorites

N 51° 37.432 W 002° 53.837
British Grid: ST 37983 92058
[Other Conversions](#)

In South Wales, United Kingdom
 E 36.8 mi from your home location

Print:
[No Logs](#) [5 Logs](#) [10 Logs](#) [Driving Directions](#)

Download: [Read about waypoint downloads](#)

Please note
Use of geocaching.com services is subject to the terms and conditions [in our disclaimer.](#)

Finding Geocaches and Waypoints on the GPS

On the GPS you can then find a geocache and navigate to it. The example below is an Oregon with the Garmin OS GB Discoverer maps on it. Please note that on the first screen below the icons have been arranged to suit my Oregon. You can set up this Main Menu from the settings. Also, on the 3rd screen when you view the list of geocaches you can have them displayed by GC number or name. I've chosen the name. You have to go into the settings to do this.

