

Transferring a Pocket Query into a Tom Tom Sat Nav



Contents

Before you start	1
Installing the macro.....	1
The Export Dialogue Box	2
Copying the files to your TomTom	2
Finding a Geocache POI in the TomTom	3

Before you start

This macro in GSAK exports your database in a form you can display on your TomTom screen. You will see caches displayed with different icons and can search the TomTom POI database by GC number, cache name or child waypoint name.

Installing the macro

This export requires the latest version of Big Wolf's TomTom macro. This can be found on the GSAK Forums in the Macro thread. Click here to open it [GSAK forum](#). The macro is called TomTom.gsk. You should install this into GSAK by clicking on it and following the prompts. Once installed you can run the macro from the Macro menu or you can add a button to the toolbar to run the macro with a single click (use the help to find out how to do this).

The screenshot shows the GSAK 7.5.0.188 interface. The 'Macro' menu is open, showing options like 'Run/Manage...', 'Edit/Create', and 'Add Button to Tool Bar...'. Below, the 'Run Macro' dialog box is displayed, showing a list of installed macros. The 'TomTom.gsk' macro is highlighted.

Macro File	Description	Version
cachemateppc.gsk	Export GSAK data to Cachemate (Pocket PC 1.1.3	
LogCache.gsk	Log cache online using data keyed into GSA 1.1	
myGMEv3.gsk	myGME - GSAK Google Maps Export	3.00k_a
TomTom.gsk	Cache and Child Waypoint exporter for TomT	2.7.1

The Export Dialogue Box

Open your database in GSAK and then run the TomTom macro. Use the help to get more information about what each option in the dialogue box does.

Export – Select what types of cache or waypoints you want to include in the export and how they will appear on the screen.

Export directory - You need to specify a location for the files created in the *Export directory* box. There are two files for each cache type; an ov2 file which is the TomTom POI information and a bmp file which is the image file for the cache icon.

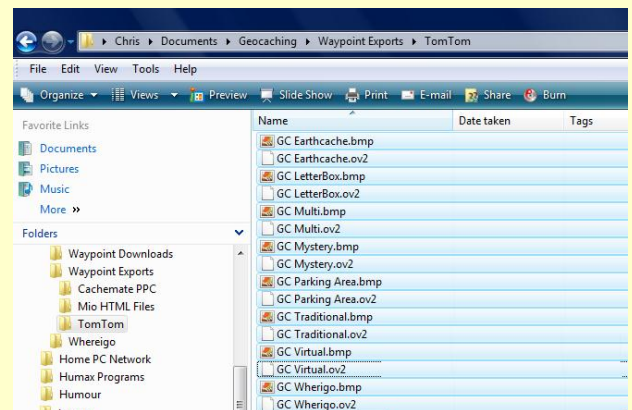
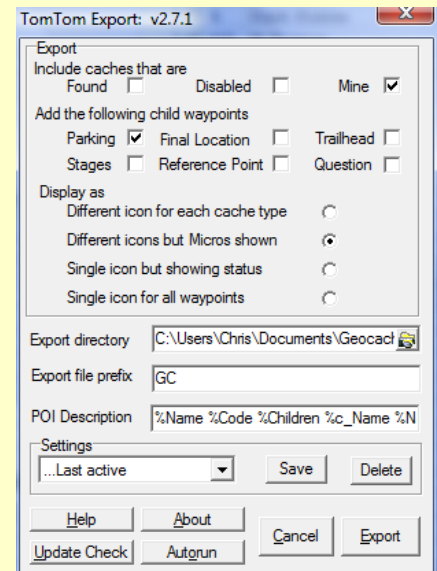
Export file prefix – Each file name starts GC so you can find them easily when searching. How many files you end up with depends on what cache types and criteria you have selected. The export creates these files in this location. In this example it will export all types of cache (by default) and also export child waypoints for *Parking* (box selected).

POI Description – this code is how the waypoint appears on the TomTom screen when you search. In this example (%Name %Code%Children %c_Name %Name) show the GC number (%code), the Name (%name) and the child waypoints (%children) and child waypoint names (%c_Name %Name).

Save – if you want to keep the settings to use again then use the Save option.

Export - When you are satisfied you have all the information then click the Export button and the files will be produced in the directory you chose. In this example it is:

C:\Users\Chris\Documents\Geocaching\Waypoint Exports\TomTom and this is what the export looks like.

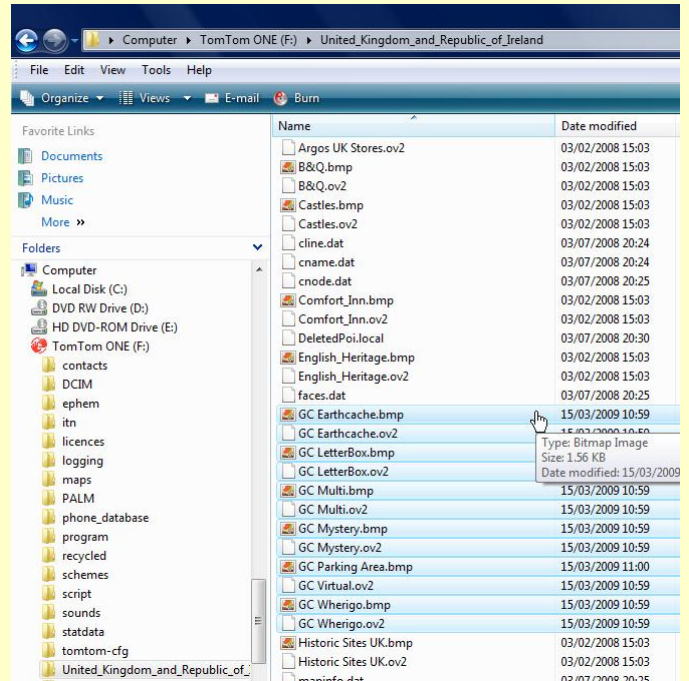
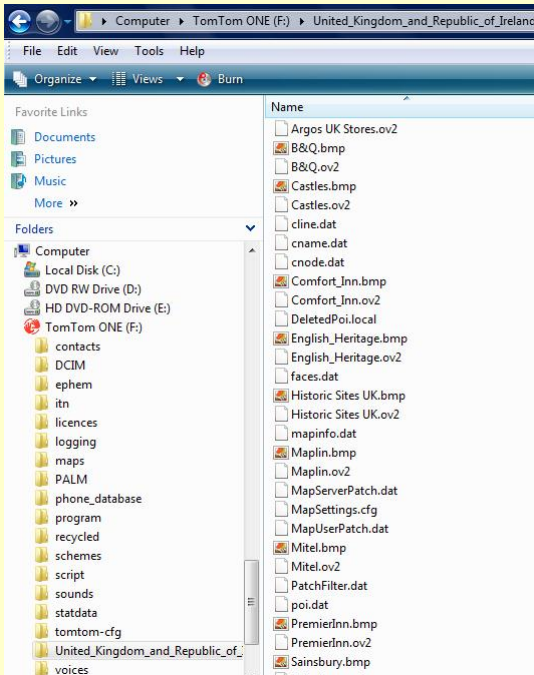


Copying the files to your TomTom

There are two ways to transfer the data to your TomTom.

1. Connect your TomTom to your PC where it will appear as a disk drive.
2. Remove the SD memory card (if your TomTom has one) and if your PC/Laptop has a card reader you can plug the SD card straight into your PC where it again appears as a disk drive.

In this example the TomTom is connected directly to the PC and appears as drive F (see image on left below). Click on the United Kingdom map folder – please note this may have a slightly different name depending on the TomTom type you have. Then paste the GSAK created files into this map folder (see image on the right below).



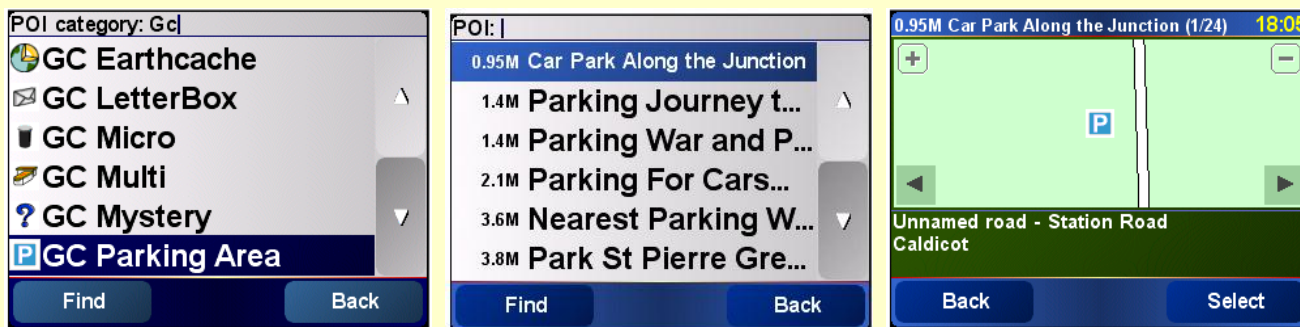
You can now disconnect the TomTom from the PC and switch it on.

Finding a Geocache POI in the TomTom

Navigate to the Geocache waypoint POI the way you normally find POI's. This example shows finding the traditional cache 'Along the Junction GC1DNF3'.



Waypoints are found the same way. This example shows finding the parking area for 'Along the Junction'.



Once the waypoint is found simply select it and navigate to it. If it is a parking spot TomTom will take you exactly to it. If you navigate to a cache location TomTom will take you to the closest spot. You should check the map of a cache location before driving there. Example of 'Along the Junction' below.

